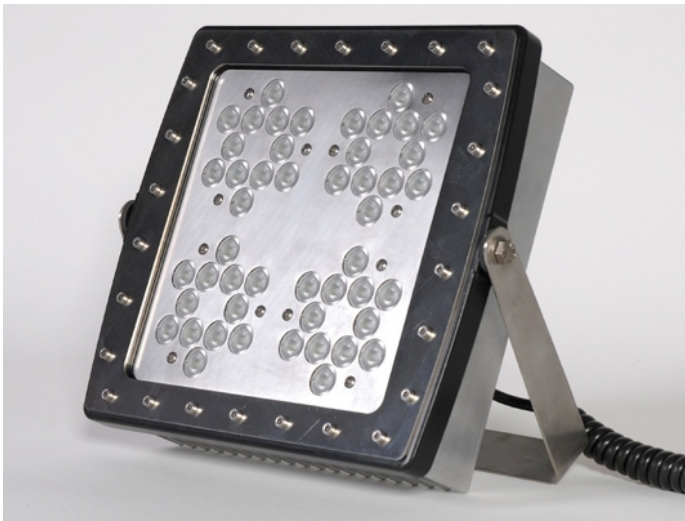


Working light Power LED 20000



The LED work light LED POWER 20000 has a light output of 20,000 lumens (at 164 W). This worklight is divided into 4 modules with 4 light circuits. If one circle of light will be damaged, the other circles of light shine on. In this way, a permanent light output is ensured.

It can be operated with the vehicle-typical operating voltages of 12 and 24 V DC. Its power consumption is at 24V only 7 A. The 5 kg heavy headlight has the dimensions 300mm x 260mm x 85mm. The spiral cable can be extended up to 4 meters

Also available with 230 V

SPECIFICATIONS

Light output	: 20,000 lm
Operating voltage	: 12 or 24V DC
Current consumption	: 14.0 A (12V) / 7.0A (24V)
Technique	: 16 circles of light 3 LEDs - Total 48 LEDs
Color temperature	: 6500 K
Housing	: aluminum
Front glass	: polycarbonate shock-insensitive
Resistance	: IP65
Dimensions	: 300 mm x 260 mm x 85 mm
Weight lamp	: 5,000 g
Reflectors	: Spot Optic (ca. 9 °) Flood optics M (ca. 23 °) Flood optics L (ca. 40 °) Flood optics XL (ca. 120 °) (individually combined)
Cable weight	: 350 g
Cable length	: 4 m (extended)
Basic variant 12-24V	: Standard tripod shooting and car plug
Basic variant 230V	: with 1 m cord / Schuko plug DIN 49442/43

Optional accessories:

Vehicle Recording
Magnetic 3-point with standard spigot
C16 plug 12/24V vehicle plug